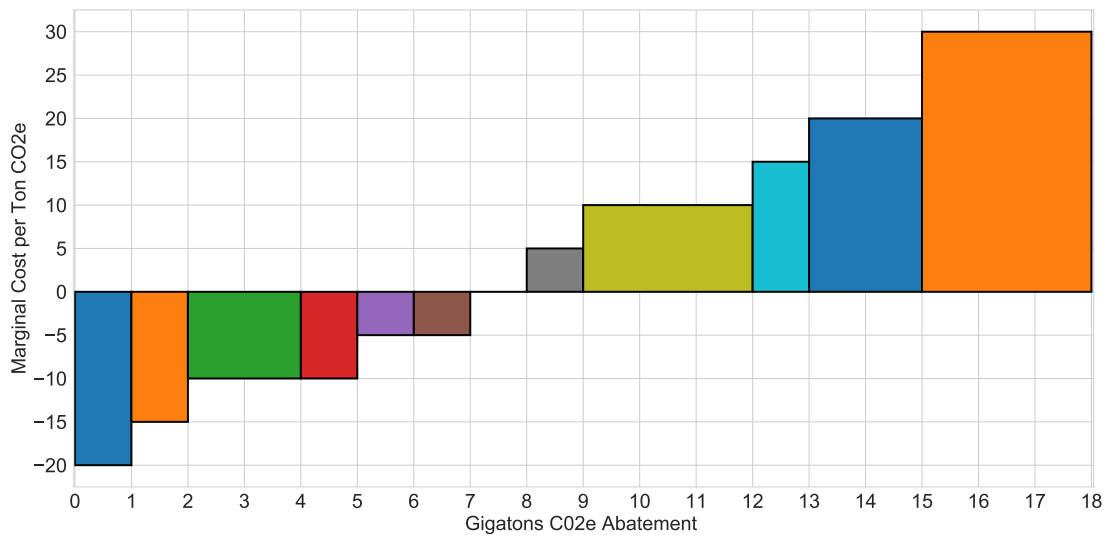


# Economics Interview Supporting Material

December 11-12, 2019

**Figure A**



**Figure B**

$$\text{TAC}(x) = \begin{cases} -10 \ln(x/10 + 1) & 0 \leq x < 10 \\ -10 \ln 2 - 1/2(x - 10) + 1/400(x - 10)^2 & 10 \leq x \end{cases}$$